



Omay (Guangzhou) Med Technologies Co., Ltd.

Room 501 and Room 302, No. 600-1, Guangshan 2nd Road, Fenghuang Street, Tianhe Dist. Guangzhou, China
Email: sales@eecpcn.com WhatsApp/Mobile: +86-18520667125

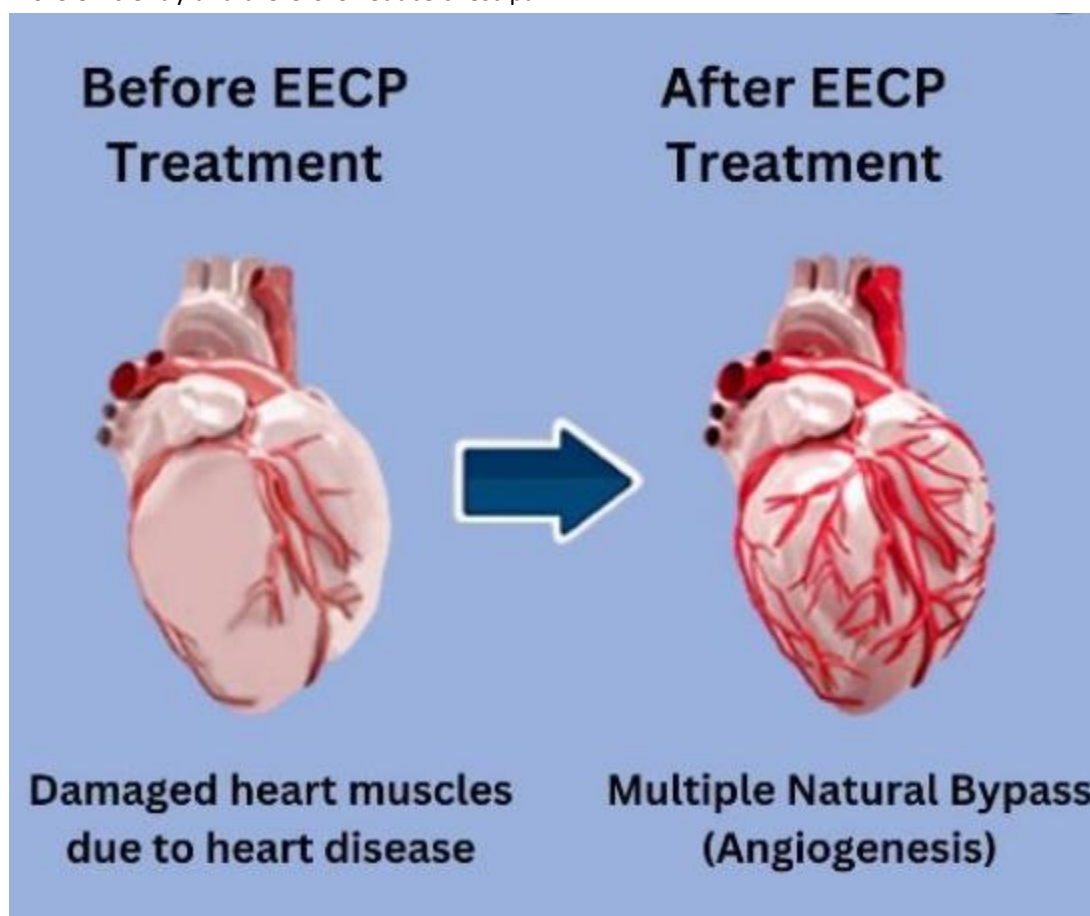
What's EECF treatment:

EECF treatment is an US FDA approved therapy for chronic stable angina/chest pain/heart attack. It treats long-term chest pain that doesn't respond to other treatments. Also recommended for people whose coronary arteries (heart blood vessels) are narrowed or blocked and need a procedure to restore blood flow to their heart and aren't eligible for surgery.

While doing EECF treatment, patient lie on the bed with cuffs wrapped around their calves, thighs and buttocks. The cuffs inflate and deflate in sync with heart beat. When heart is relaxing, the cuffs compress the blood vessels in the lower limbs and pushing the blood flow of low limbs to heart, improve blood perfusion of the heart.

When heart is pumping, the cuffs deflate immediately. This lowers resistance in the blood vessels in the legs so that blood pumped more easily from heart.

The basic principle of EECF treatment involves increasing the amount of blood returning to the heart, encourage new pathways around the narrowed or blocked coronary arteries which helps supply more oxygen to its starved areas, with more oxygen available, the heart can function much more efficiently and therefore reduce chest pain.









Omay (Guangzhou) Med Technologies Co., Ltd.

Room 501 and Room 302, No.600-1, Guangshan 2nd Road, Fenghuang Street, Tianhe Dist. Guangzhou, China
 Email:sales@eecpcn.com WhatsApp/Mobile:+86-18520667125

Product features:

- 18 inch LCD touch screen design, real-time display various treatment data, easy operation.
- The compressor is imported from Germany, Stable and powerful.
- Ultra low working noise, Machine with noise damping device.
- Variety of auto-safety production: power-off protection, high-pressure protection, manual pressure release
- With patient's database function.



| OM-A | OM-A-I | OM-A-ECP1 | OM-A-II |
|--|---|--|---|
|  |  |  |  |
| <ul style="list-style-type: none"> ● Touch screen ● Enhanced cuffs | <ul style="list-style-type: none"> ● Touch screen ● Blood pressure function ● Enhanced cuffs | <ul style="list-style-type: none"> ● Touch screen ● Blood pressure function ● Comfortable cuffs | <ul style="list-style-type: none"> ● Touch screen ● Enhanced cuffs ● Cart-based, mobile type for easy moving |
| 15 inch screen | 18 inch screen | 18 inch screen | 18 inch screen |
| CE, US FDA, SFDA | CFDA | CFDA | CFDA, CB, KGMP |